

Fax reply
to Niedersachsen Global GmbH

NGlobal
Niedersachsen Global GmbH

Fax: +49 (0) 511 - 89 70 39 69

Sender:

Firm/institution

Title, surname, first name

Position, e-mail address

Telephone

I am interested in information about:

Business Location Niedersachsen

- General information
- Legal framework conditions
- Funding programmes

- Mobility (automotive, logistics, aerospace and telematics)
- Food industry
- Energy industry
- Healthcare industry/Life Sciences
- Mechanical engineering
- Service industries/media sector
- Other topics (please specify):



About KomSIS.de

KomSIS.de is a free information and search service for currently available business sites and commercial properties. The service is complemented by extensive facts and figures all about the Niedersachsen economic region.

KomSIS.de is a service offer provided by the administrative districts in Niedersachsen in collaboration with regio gmbh and with the support of the Niedersachsen Ministry of Economics, Labour and Transport as well as the central state organisation "Niedersachsen Global GmbH, NGlobal".

The information presented in KomSIS.de is continuously updated with current offers for business sites and commercial properties.

More about Niedersachsen

NGlobal
Niedersachsen Global GmbH

Osterstraße 60
30159 Hannover, Germany
Tel.: +49 (0)511- 89 70 39 0
Fax: +49 (0)511 - 89 70 39 69
info@nglobal.de
www.nglobal.de

More about KomSIS.de

regio gmbh

Uhlhornsweg 99A
26129 Oldenburg, Germany
Tel.: +49 (0)441 - 798 29 96
regio@regio-gmbh.de
www.regio-gmbh.de

Supported
by the European Regional
Development Fund



KOMSIS.DE

The Location Information Service for Niedersachsen



Your fast service for

- :: available business sites
- :: attractive commercial properties
- :: up-to-date facts and figures
- :: competent contacts
- :: further information



Niedersachsen

Location searches in Niedersachsen – made easy:

Three steps to your goal with www.komsis.de

1 Starting your search



Finding locations

Select "Finding locations" on the start page or in the menu and start the search for your ideal business site or commercial property.

Business Sites

Size available: ha

Distance to... Motorway:

Int. Airport:

FIND ▶

[Extended search by criteria](#)

[Interactive Map search](#) NEW!

Commercial Properties

Use as... Office space: min. m²

Production space: min. m²

Sales area: min. m²

FIND ▶

[Extended search by criteria](#)

[Map search](#)

Above: Example of a business site search by a logistics company looking for a large-sized location close to the motorway.

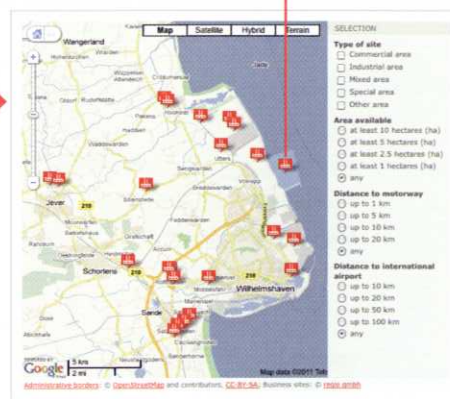
The "Extended search by criteria" offers you additional options to narrow down your search. Alternatively you can also use the "Interactive Map search", which shows you an overview of all the offers. You can quickly navigate within the map to interesting locations or regions and look at the site offers available there.

2 Making a selection

After sending your search request, the results list shows all the commercial real estate meeting your selected criteria. By calling up the detailed profiles from the list, you can directly compare the local offerings and choose the business site or commercial property that suits you best.

No.	Location	Business site	available area	Type of site
31.	Ganderkesee	Schluppenbühren Güterverkehrszentrum (Freight Village) JadeWeserPort	23.00 ha ✓	GE GI NI SO Other
32.	Wilhelmshaven	Haneestraße-West	140.00 ha ✓ ✓	
33.	Braunschweig	Hedemünden 2	25.00 ha ✓	
34.	Hann. Münden	Hörster Meide	13.00 ha ✓	
35.	Neuenkirchen-Vörden	Industriegebiet (Industrial area) Lührbocker Kreuz	10.00 ha ✓	
36.	Wietzenhof	Industriegebiet (Industrial area) Schütterfor Kreuz	44.20 ha ✓	
37.	Schüttorf	Industriegebiet (Industrial area) Einziger Straße (A 7 motorway access point Doerfmark)	26.00 ha ✓	
38.	Bad Fallingb. Postel	Industriegebiet Ost (East Industrial area), with "Massivhauspark"	10.00 ha ✓	
39.	Bad Fallingb. Postel	Industriegebiet Ost (East Industrial area), with "Massivhauspark"	27.85 ha ✓	
40.	Lathen	Industriepark (Industrial park) A 31	30.00 ha ✓	
41.	Braunschweig	Interkommunaler Gewerbepark (Intermunicipal business park) Walter See	58.60 ha ✓	

Above: Via the red triangles in the title bar of the results list, the list can be sorted, for example according to the available site sizes.



Left: One example for the interactive map search. You want to take a closer look at the business sites available around the new JadeWeserPort deepwater container port and therefore navigate your way to the location of Wilhelmshaven. By clicking the symbols on the map, you open up the individual profiles.

3 Using the search result

Each result featured comes with extensive information about the geographical position, size, development plan, transport links, supply infrastructure, prices and the provider offering it. The details about the site on offer are complemented by a "Location profile" of the city or municipality, which informs about the prevailing local conditions and location factors.

Güterverkehrszentrum (Freight Village) JadeWeserPort

Location: City of Wilhelmshaven (Location profile) [Show detailed map](#)

Object description: Port-near logistics zone, industrial and commercial estate

Internal designation: JadeWeserPort

Site owner: Other owners

Comments on the ownership structure: Lower Saxony state g...

Link to the business site: <http://www.jwplz.de>

Type and Size:

- Total size (gross): 160 ha
- Available net area: 140 ha
- Area available immediately: 0 ha
- Area available later: 140 ha
- Zone designation: Commercial ...

Provider: JadeWeserPort Logi... Wilhelmshaven

Street address: Jade Kutterstraße 3 26386 Wilhelmshaven

Telephone: +49 (0)4421 / 40 98 0 - 0

Fax: +49 (0)4421 / 40 98 0 - 88

E-mail: info@jadeweserport.de

Homepage: <http://www.jwplz.de>

Contact: Mr. Rüdiger Beckmann Telephone: +49 (0)4421 / 40 98 0 - 95 Fax: +49 (0) 4421 / 40 98 0 - 88 E-mail: r.beckmann@jadeweserport.de

Mr. Hermann Müller Telephone: +49 (0) 4421 / 40 98 0 - 97

Above: At the end of a profile, you will find information about the relevant person or institution to contact. The interactive detailed map shows aerial views as well as street and terrain maps, whereby any section can be displayed at various zoom levels.

We support you in finding your location!
Please use the fax form to contact us directly.